

# Baker Lifestyle

## HOMES & GARDENS II



Fabrics and Wallpapers

# Homes & Gardens Collection II

This eclectic collection takes its inspiration from global travel, encompassing interiors, textiles and colour.

## Global Outlook

For centuries, merchants travelling the Spice Route returned from their travels with a wealth of inspiration – from shimmering silks and sumptuous weaves to rich colour palettes and exotic motifs that the British embraced and made their own. It is this same spirit that gives a distinctive flavour to many of the designs in the new Homes & Gardens Collection. With vibrant, unexpected combinations of oranges, ochres and rich earth tones, the stunning new fabrics and wallpapers exude the warmth and life that make them ideal for creating a classic look with an exotic twist.

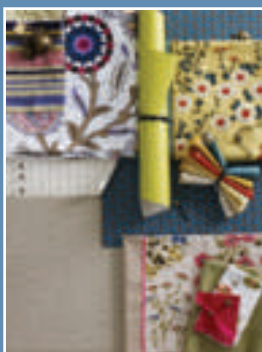
## Scandinavian Soul

The work of the 19th-century Swedish artist Carl Larsson expresses how life in Sweden and Norway has long been firmly focused on the home. Maybe it's the short days and long winters that have given Scandinavia's inhabitants such an impressive knack for creating homes where everyone would wish to spend time. This stylish look is inspired by the simple motifs, clean lines and crisp colour combinations that characterise Scandinavian design. It is a wonderfully versatile style that sits as happily within a sleek, contemporary environment as it does in a country cottage.

## Miami Mix

What makes America so seductive to visitors is the wonderful contrasts it offers – geographical, ethnic and architectural. Miami, in particular, is a melting pot of influences and this is reflected in its vibrant style where motifs, scale and colours clash with all the vigour of a jazz band. In this exciting look blues, limes and greys characterise the city and create a feel that is as lively as the mix of saxophone, piano, trumpet and double bass.

Global Outlook



Scandinavian Soul



Miami Mix





Atticus, Nara Plain, Timaru, Bell Flower, Madurai.



Mallow Stripe, Atticus, Nara Plain.



Tretten.



Nara Plain, Bell Flower, Madurai.



# Scandinavian Soul

Simple motifs and clean lines matched by crisp colour combinations characterising Scandinavian design.





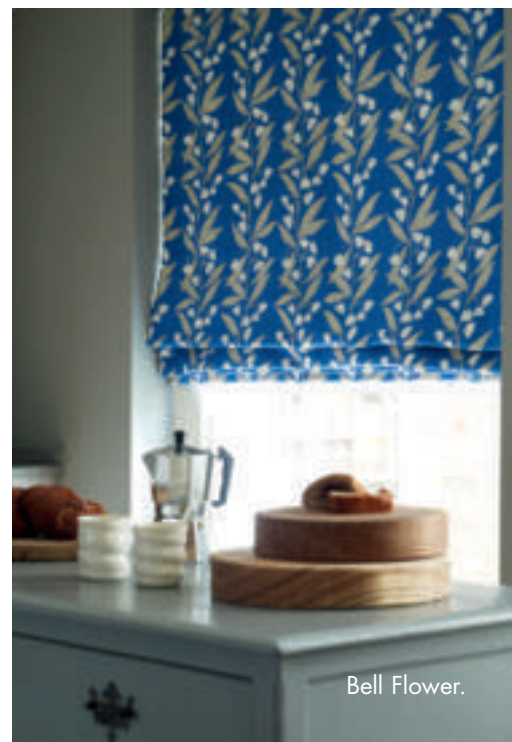




Kalmar, Kansai Strie, Skane, Tretten.



Coffee Bean.



Bell Flower.



# Miami Mix

A vivid, melting pot  
of motifs, scale and  
colours reflecting the  
excitement of city life.





Ming, Zinnia, Indora Stripe, Tretten, Soren Stripe.



Ming, Zinnia, Nara Plain, Indora Stripe, Bell Flower, Tretten, Atticus.



April Showers.



Timaru, Nara Plain.



Zinnia, Bell Flower, Indora Stripe.



Tasie Stripe, Timaru.



Bell Flower.



Tasie Stripe, Mallow Stripe.



Madurai.





# Global Outlook

Vibrant, unexpected  
groups of rich hues and  
exotic motifs from the  
Middle East and beyond.





Makasar, Mallow Stripe.



Kathak Paisley.

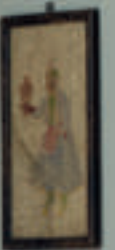


Kathak Paisley, Coffee Bean, April Showers, Roundel.



Zinnia, Makasar, Atticus.





# Homes & Gardens Collection II

## FABRICS



### ARADY

Fine stitched sprig pattern.

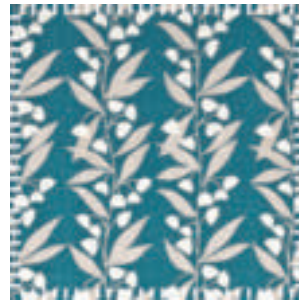
Available in four colourways, including PF50352/2 (shown), bamboo/cotton mix. 128cm wide.



### ATTICUS

Printed patchwork pattern.

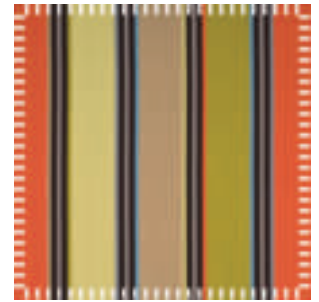
Available in five colourways, including PP50362/2 (shown), linen/cotton mix, 137cm wide.



### BELL FLOWER

Smart stylish botanical pattern.

Available in four colourways, including PP50361/3 (shown), linen/cotton, 137cm wide.



### INDORA STRIPE

Bold bands of strong colour.

Available in six colourways, including PF50349/1 (shown), cotton/viscose mix, 137cm wide.



### MALLOW STRIPE

Varying widths in toning hues.

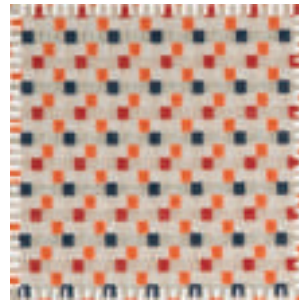
Available in six colourways, including PP50360/1 (shown), linen/cotton mix, 137cm wide.



### NARA

Elaborate paisley floral mix.

Available in five colourways, including PF50351/4 (shown), cotton/polyester mix. 127cm wide.



### SKANE

Small interwoven squares.

Available in six colourways, including PF50347/1 (shown), cotton/viscose mix, 137cm wide.



### SOREN STRIPE

Distinctive colourful dotted lines.

Available in six colourways, including PF50350/2 (shown), cotton/viscose mix, 137cm wide.

### NARA PLAIN

Soft cotton upholstery weight fabric.

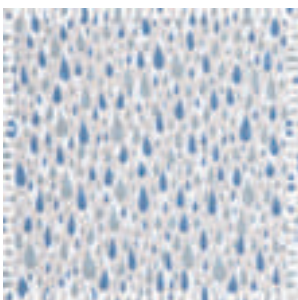
Available in 17 colourways, recycled cotton, 137cm wide.

### KANSAI STRIE

Plain with stria effect.

Available in nine colourways, recycled cotton, 137cm wide.

## WALLPAPERS



### APRIL SHOWERS

Small, subtle raindrop pattern.

Available in five colourways, including PW78015/2 (shown), spongeable.



### BELL FLOWER

Trailing floral stripe design.

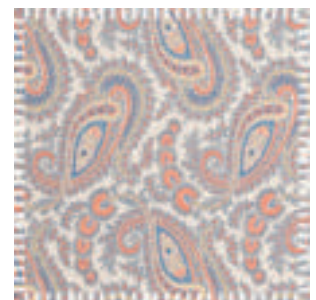
Available in eight colourways, including PW78020/3 (shown), spongeable.



### COFFEE BEAN

Small intricate all-over pattern.

Available in eight colourways, including PW78021/8 (shown), spongeable.



### KATHAK PAISLEY

Rich Eastern-Inspired paisley.

Available in four colourways, including PW78018/3 (shown), spongeable.



**KALMAR**

Lively graphic composition.

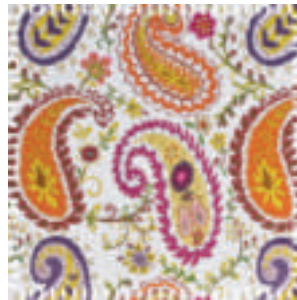
Available in six colourways, including PF50346/1 (shown), cotton/viscose mix, 137cm wide



**MADURAI**

Embroidered and printed Stripes.

Available in five colourways, including PP50355/3 (shown), cotton, 130cm wide.



**MAKASAR**

Large embroidered paisley motif.

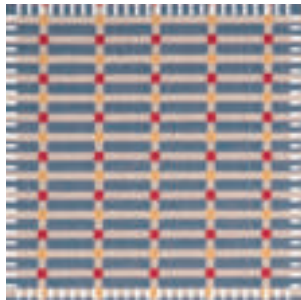
Available in four colourways, including PF50358/3 (shown), cotton/viscose mix, 126cm wide.



**TIMARU**

Delicate spots with soft edges.

Available in four colourways, including PF50363/2 (shown), cotton, 126cm wide.



**TRETEN**

Neat pattern of narrow bars.

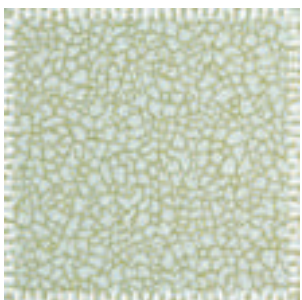
Available in six colourways, including PF50348/5 (shown), cotton/viscose mix, 137cm wide.



**ZINNIA**

Free flowing floral design.

Available in four colourways including PP50359/4 (shown), linen/cotton, 137cm wide.



**MING**

Two tone crackle-glaze design.

Available in nine colourways, including PW78017/2 (shown), spongeable.



**ROUNDEL**

Contemporary geometric rings.

Available in six colourways, including PW78019/5 (shown), spongeable.



**TASIE STRIPE**

Elegant wide and narrow banding.

Available in nine colourways, including PW78016/2 (shown), spongeable.

**AUSTRALIA**

Elliott Clarke

Tel: +61 1300 355 468

E-mail: info@elliottclarke.com.au

**BELGIUM**

Furnitex Agenturen bvba

Tel: +32 1465 2880

E-mail: info@furnitex.be

**CANADA**

Lee Jofa Inc

Tel: +1 800 535 3258

E-mail: cust.service@leejofa.com

**DENMARK**

B. Right Interiors

Tel: +45 396 11171

E-mail: b-right@tdcadsl.dk

**FINLAND**

Oy Naccanil AB

Tel: +35 810 321 3580

E-mail: info@naccanil.fi

**FRANCE**

Paris Showroom

Tel: +33 1 44 55 02 50

Email: paris@brunschwig.com

**GERMANY & AUSTRIA**

Hahne & Schönberg GmbH

Tel: +49 89 54 27730

E-mail: kontakt@hs-stoffe.de

**ITALY**

Flortex Textile

Tel: +39 0331 593350

E-mail: sales@flortextile.it

**MIDDLE EAST**

Rubelli / Sahco

Tel: +971 4332 9197

E-mail: office@rubellisahco.ae

**NETHERLANDS**

Mischa de Vries

Tel: +31 (0) 70 3693255

E-mail: info@mischadevries.nl

**NEW ZEALAND**

Warwick Fabrics

Tel: +64 (0) 9 477 3080

E-mail: info@warwick.co.nz

**NORWAY**

Poesi Interioragentur

Tel: +47 22 12 8180

E-mail: post@poesiinterior.no

**RUSSIA**

Kimberley Expertise

Tel: +7 495 690 55 98

E-mail: op@kimberleyexpertise.com

**SPAIN & PORTUGAL**

Gaston y Daniela SA

Tel: +34 91 485 2603

E-mail: import@gastonydaniela.com

**SWEDEN**

A B Stiltyger

Tel: +46 8 660 8630

E-mail: ab.stiltyger@telia.com

**SWITZERLAND**

Raphaël Vadnaï

Tel: +41 21 728 36 27

E-mail: vadnaitex@hispeed.ch

**SOUTH AFRICA**

St. Leger & Viney (Pty) Ltd.

Tel: +27 11 444 6722

E-mail: micheler@stleger.co.za

**UK**

London Showroom

Tel: +44 (0) 207 351 7760

Email: sales@gpjbaker.com

**USA**

Lee Jofa Inc

Tel: +1 888 533 5632

E-mail: customer.service@leejofa.com



Baker Lifestyle  
HOMES&GARDENS II

**UK**

+44 (0) 1202 266 750 (UK)  
+44 (0) 1202 266 996 (Export)  
sales@bakerlifestyle.co.uk  
www.bakerlifestyle.co.uk

**France**

+33 1 44 55 02 50  
paris@brunschwig.com  
www.brunschwig.com

**USA**

+1 888 533 5632  
customer.service@leejofa.com  
www.leejofa.com