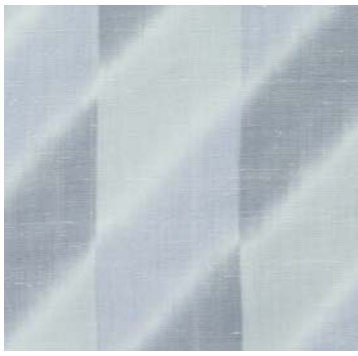


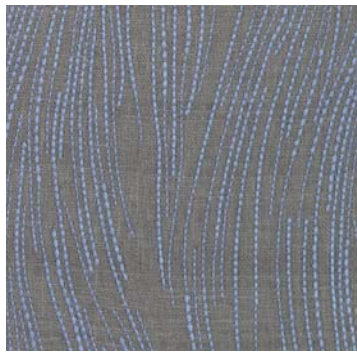


kelly wearstler

GROUNDWORKS AT LEE JOFA



MALA IN LAKE
GWF-3103-513



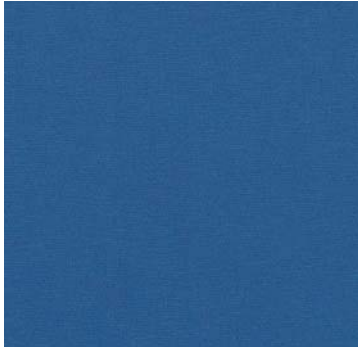
CURRENTS SILK IN SLATE/GREY
GWF-3112-511



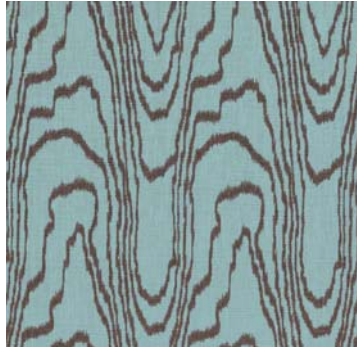
BENGAL BAZAAR IN GREY/INDIGO
GWF-2811-511



AGATE IN SLATE/LINEN
GWF-3102-516



SUNBLEACHED IN INDIGO
GWF-3110-550



AGATE IN LAKE/MINK
GWF-3102-138



OBLIQUE IN SLATE/GRAPHITE
GWF-3050-511



CHANNELS IN PERIWINKLE/OAT
GWF-3101-516



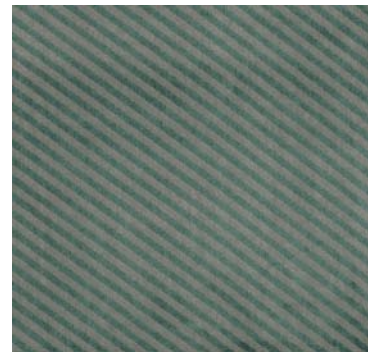
WATER STRIPE EMB. IN JUNIPER/LAKE
GWF-3100-313



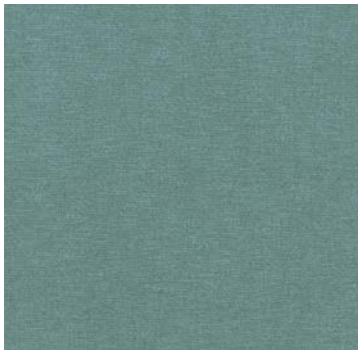
FELINE IN LAKE/SLATE
GWF-3106-313



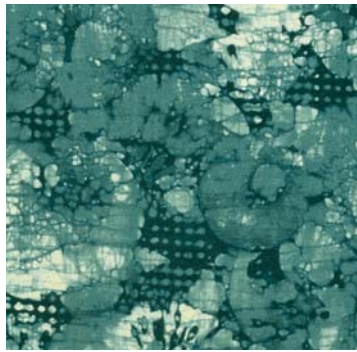
SONOMA IN LAKE
GWF-3109-313



OBLIQUE IN LAKE/LINEN
GWF-3050-311



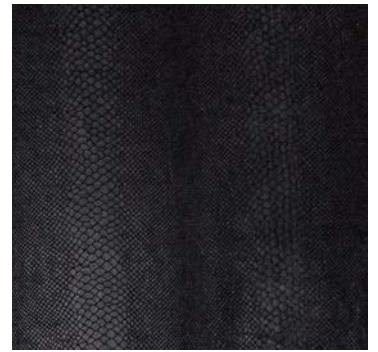
SUNBLEACHED IN LAKE
GWF-3110-313



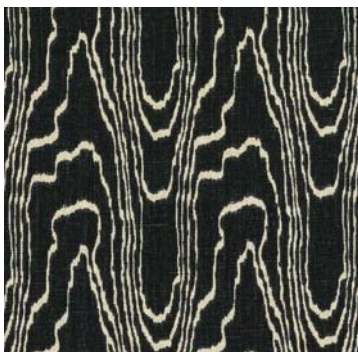
MINERAL IN JUNIPER/LAKE
GWF-3104-3



TEMPEST IN TRUFFLE
GWF-3111-816



SERPENT IN EBONY
GWF-3107-8



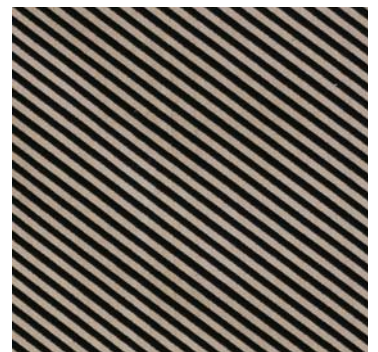
AGATE IN EBONY/BEIGE
GWF-3102-816



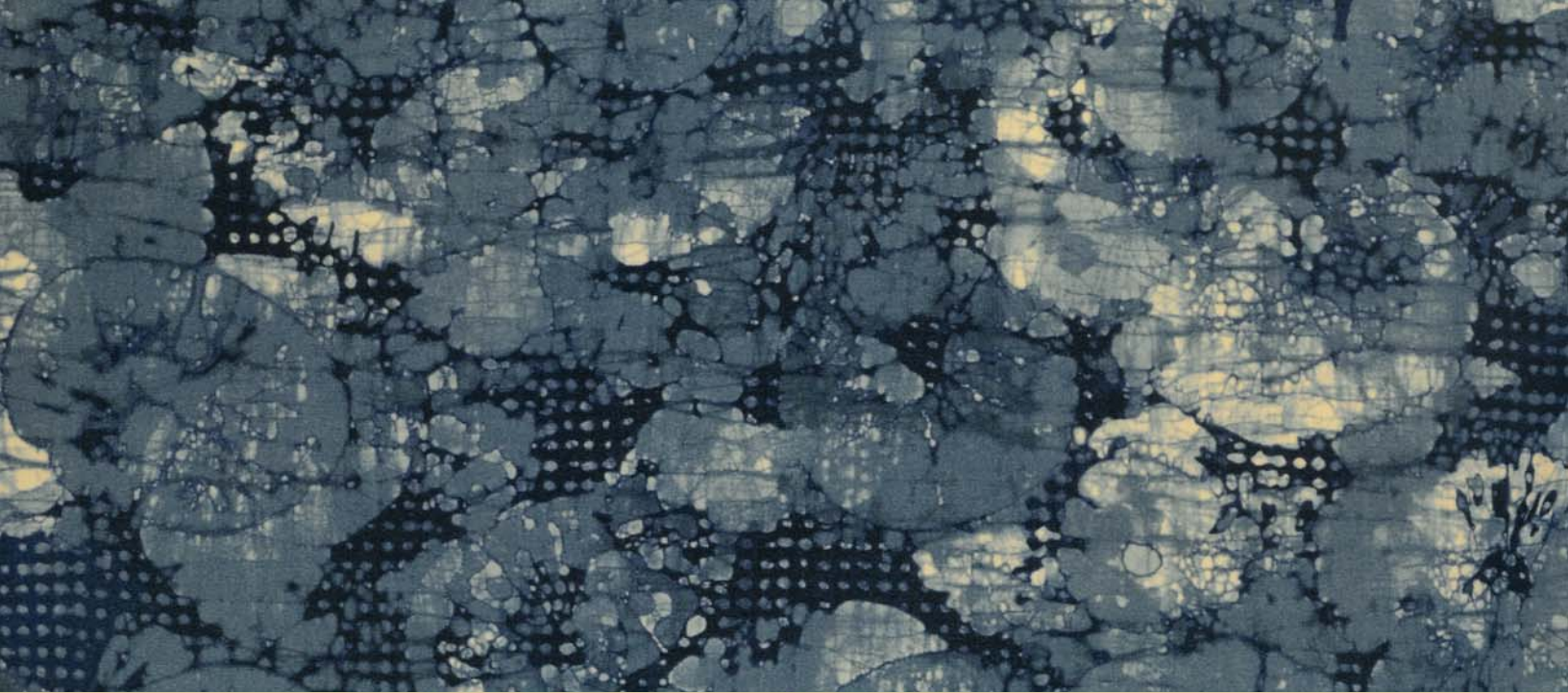
SONOMA IN EBONY
GWF-3109-8



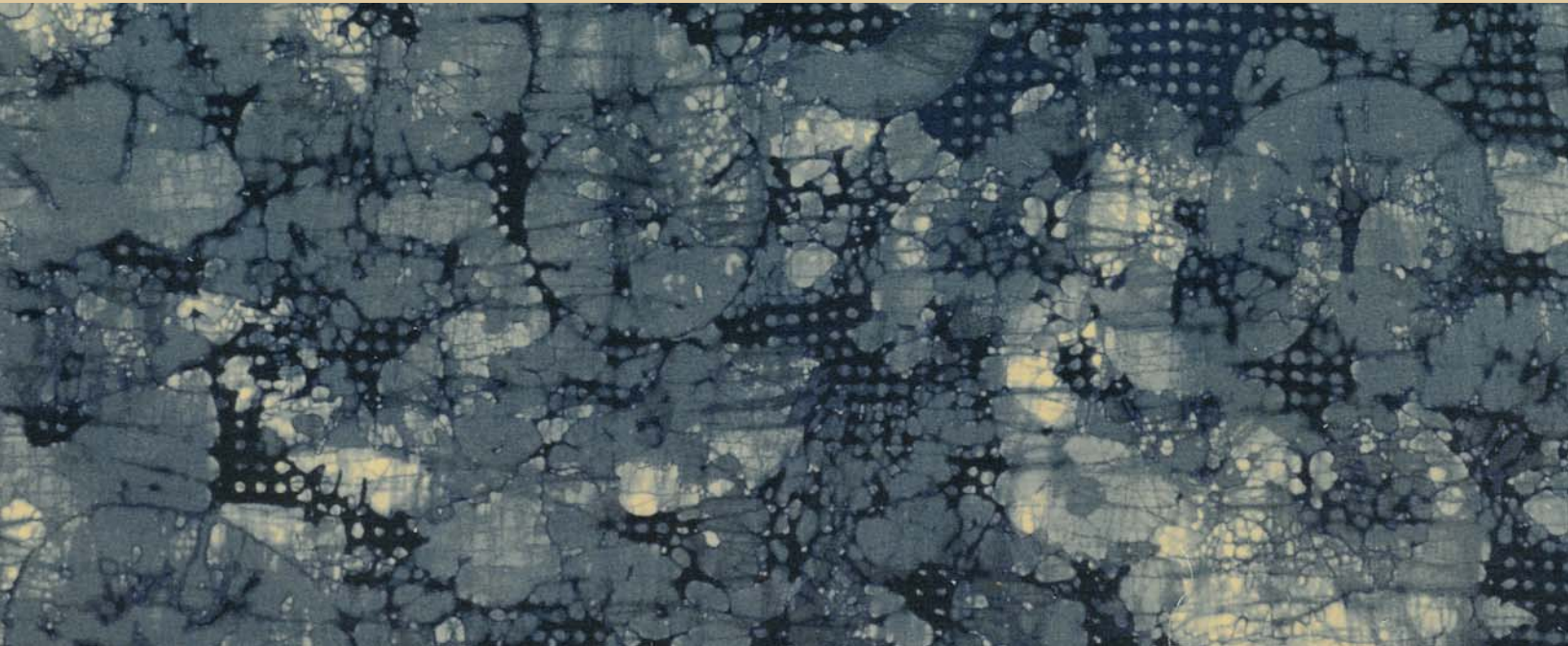
FELINE IN EBONY/BEIGE
GWF-3106-816



OBLIQUE IN BEIGE/NOIR
GWF-3050-816



In her second collaboration with Groundworks, Kelly Wearstler has created a vibrant and inspiring fabric collection that combines her love for natural materials, graphic patterns and unique colors. The collection features organic and textural designs that are quietly elegant, as well as the bold prints that have become a Kelly Wearstler signature. All are available in a palette that Kelly uses throughout her interior design and fashion projects - black and white, periwinkle blue, pistachio green, smoky aubergine and coral, citrine yellow and warm charcoal grey and ivory.





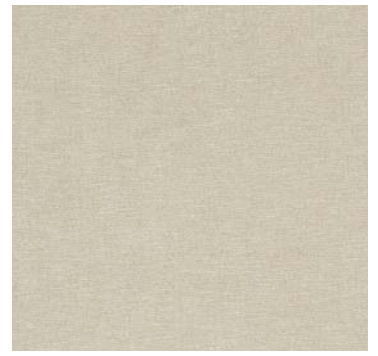
AGATE IN PEARL/BEIGE
GWF-3102-116



TEMPEST IN LINEN
GWF-3111-616



CHANNELS IN TAUPE/IVORY
GWF-3101-616



SUNBLEACHED IN LINEN
GWF-3110-616



BARCELO IN TAUPE
GWF-3105-611



SONOMA IN MUSHROOM
GWF-3109-616



AGATE IN TAUPE/GOLD
GWF-3102-411



SONOMA IN STRAW
GWF-3109-416



BENGAL BAZAAR IN MUSHROOM/STRAW
GWF-2811-614



TEMPEST IN GREY
GWF-3111-611



OBLIQUE IN STRAW/GREY
GWF-3050-411



BARCELO IN ALABASTER
GWF-3105-116



MALA IN RAISIN
GWF-3103-911



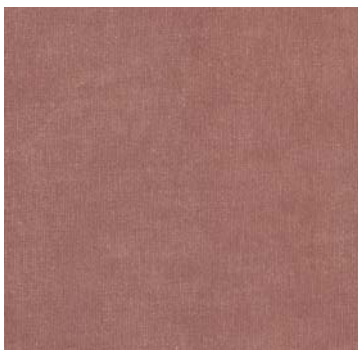
BENGAL BAZAAR IN GRAPHITE/ROSE
GWF-2811-711



WATER STRIPE EMB. IN RAISIN/ROSE
GWF-3100-916



FELINE IN GRAPHITE/ROSE
GWF-3106-711



SUNBLEACHED IN DUSTY ROSE
GWF-3110-712



CHANNELS IN PLUM/OATMEAL
GWF-3101-911



CURRENTS SILK IN ROSE/LINEN
GWF-3112-716



BARCELO IN TRUFFLE
GWF-3105-68





For access to our digital library, please visit:
leejofa.com/digitalibrary

LEE JOFA®

U.S. 800 453 3563 CANADA 800 535 3258 UK 44 (0)1202 266700 LEEJOFA.COM

Front/Back Cover: Background fabric: Sunbleached in Ebony GWF-3110-8 Fabric clockwise from top left: Serpent in Ebony GWF-3107-8, Mineral in Ebony/Taupe GWF-3104-811, Currents Linen in Linen/Gold GWF-3113-416, Tempest in Truffie GWF-3111-816, Channels in Ebony/Ivory GWF-3101-816, Currents Silk in Ebony/Oatmeal GWF-3112-816, Sonoma in Ebony GWF-3109-8, Sonoma in Oatmeal GWF-3109-116, Agate in Ebony/Beige GWF-3102-816, Currents Linen in Ebony/Gold GWF-3113-48, Sunbleached in Ebony GWF-3110-8, Feline in Ebony/Beige GWF-3106-816, Sunbleached in Linen GWF-3110-616, Oblique in Beige/Noir GWF-3050-816, Patina Linen in Gold GWF-3115-4; **Inside Flap:** **Pillow Stack:** Feline in Lake/Slate GWF-3106-313, Sonoma in Lake GWF-3109-313, Agate in Lake/Mink GWF-3102-138, Oblique in Lake/Linen GWF-3050-311, Sunbleached in Lake GWF-3110-313, Mineral in Juniper/Lake GWF-3104-3; **Top:** Channels in Taupe/Ivory GWF-3101-616, Patina Linen in Gold GWF-3115-4, Barcelo in Truffie GWF-3105-68, Serpent Natural in Linen GWF-3114-616, Sonoma in Straw GWF-3109-416, Agate in Taupe/Gold GWF-3102-411, Oblique in Straw/Grey GWF-3050-411, Barcelo in Alabaster GWF-3105-116, Currents Linen in Linen/Gold GWF-3113-416; **Middle:** Channels in Ebony/Ivory GWF-3101-816; **Bottom:** Mala in Lake GWF-3103-513, Agate in Slate/Linen GWF-3102-516, Sonoma in Cornflower GWF-3109-510, Barcelo in Taupe GWF-3105-611, Oblique in Slate/Graphite GWF-3050-511, Channels in Periwinkle/Oat GWF-3101-516, Sunbleached in Linen GWF-3110-616, Mineral in Indigo/Slate GWF-3104-511, Sunbleached in Graphite GWF-3110-11; **Inside Middle Panel:** Mineral in Indigo/Slate GWF-3104-511